

**OPEN-AIR MUSEUM** Kulturen fills two blocks in the centre of Lund. Here you can stroll among some thirty buildings showing how people have lived in Skåne through the ages. The park is an oasis with room for both play and rest. Let yourself be inspired by the beautiful surroundings, the unique buildings and the gardens! Admission free.



**ADMISSION TO EXHIBITIONS**

Adults SEK 70  
Students with ID SEK 35  
Groups (at least 10 persons) SEK 35  
School classes, children and Kulturen members: admission free  
Events, tours and lectures are subject to a special entrance fee.

Free admission to the gardens and the park!

**KULTURENS ÖSTARP** The farm of Gamlegård from 1812 with its wonderful rustic garden. Staffed by guides 1/5-30/8, guided tours at 2 p.m. Read more at [www.kulturen.com](http://www.kulturen.com) Admission free. At the Östarp Inn you can experience fine Scanian cuisine. Read more at [www.ostarpsgastis.se](http://www.ostarpsgastis.se) Tel: 046-802 29.

**KULTURENS HÖKERI** – an old grocery shop in central Lund. Admission free.

**THE TEGNÉR MUSEUM** Esaias Tegnér's 19th-century home in Lund. Admission SEK 10



**KULTUREN**

Tegnérplatsen LUND | tel 046-35 04 00 | [info@kulturen.com](mailto:info@kulturen.com) | [www.kulturen.com](http://www.kulturen.com)

**OPENING HOURS**

1 May – 31 August every day 11 a.m. – 6 p.m. | September – 30 April Tuesday – Sunday 12–4 p.m.  
Closed: Christmas Eve, Christmas Day, New Year's Eve and New Year's Day.



K

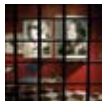
**KULTUREN 2009**

EXPERIENCE SOMETHING OUT OF THE ORDINARY



**EXHIBITIONS**

- CHINA – In the middle of the world
- METROPOLIS – Lund in the Middle Ages
- SURVIVING – Voices from Ravensbrück
- MODERNISM – A new art. A new world
- CULTURES OF GLASS – From Egypt to Orrefors
- THINGS FOR PLAY – A history of toys
- FROM A TO Ö – The history of the book
- THE UNIVERSITY MUSEUM
- SILVER – Craft & design
- CERAMICS – From China to Sweden
- WEAPONS – Power over life
- TEXTILES – A study chamber



**WHAT'S HAPPENING**

- Family day – 17 May
- Folk music day – 24 May
- National Day celebrations – 6 June
- Medieval festival – 13–14 June
- Midsummer celebrations – 19 June
- Summer tours and family activities July–August
- Christmas preparations and market – 28–29 November
- Lucia Eve in Bosebo Church – 12 December



**THIS YEAR'S EXHIBITIONS**

- SIGNE PERSSON-MELIN Until 16 August  
Ceramic artist and designer.
- REFRICATES 17 May – 27 September  
Portrait series by Christer Järeslåt
- FOLK-DRESS TREEDITIONS Bea Szenfeld 28 May – year's end  
An unusual and inspiring outdoor installation.
- LENNART HELLSING 19 Sep 2009 – 10 Jan 2010  
An exhibition for young and old about Helsing and his world of children's books.
- FOLK ART & DESIGN 18 Oct until further notice  
Four exhibitions on folk art.
- HENRY GOODWIN 25 Oct – 10 Jan  
Pictorialist and portraitist from the early 20th century.



**MUSEUM SHOP**

Exquisite craft and design, presents and books.



**KULTURKROGEN and GARDEN CAFÉ**

Delicious home cooking with an international touch. At weekends the restaurant serves its popular brunch. Tel. 046-14 65 10. [www.kulturkrogen.se](http://www.kulturkrogen.se)

Kulturen's garden café is open from 15 June to 16 August. Coffee and cakes in a wonderful outdoor setting!



More events can be found at [www.kulturen.com](http://www.kulturen.com)